

GRANTS FOR
2020-21



New Providence

EDUCATION FOUNDATION

Every School. Every Subject. Every Student.

What we do.

NPEF creates successful partnerships between the New Providence, New Jersey, public school community and the community at large, including residents, alumni, and businesses, to provide for and enhance the educational experiences of our students.

The members of NPEF and their supporters raise and distribute monies for the schools each and every year. These grants are teacher-initiated, help supplement existing programs, and provide for new and innovative efforts, many of which would not otherwise be funded.

- Foster partnerships between the New Providence Public Schools and the community to enrich the educational programs in the schools
- Support new and innovative educational programs that are otherwise not funded through traditional sources.

 [npedfoundation.org](https://www.npedfoundation.org)

What we stand for.

New Providence Education Foundation was formed in 2004 with the charter to:

- Generate and allocate resources that will enhance the educational experiences of students in the New Providence Public Schools.

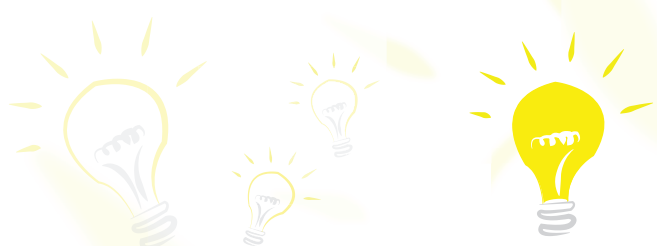
Who we are.

Anne McLane, *President*
Chris Naughton, *Co-Vice President*
Robyn Kelly, *Co-Vice President*
Denis Naughton, *Treasurer*
Sharon Licari, *Secretary*

BOARD MEMBERS

Suzanne Botvinis, Eugene Castagna,
Debra Karrat, Amy Lepre,
Kate McShane, Gina Michal,
Gregory Robinson, Gina Snyder,
Kelly Szeto, Shane Wike,
Jennifer Killea, David Miceli, Ed.D.

Supporting Innovative Educational Programs That Empower Our Children



NEW PROVIDENCE EDUCATION FOUNDATION

* Lu Interactive Playground

\$26,689 | School: AWR

The Lu Interactive Playground is an innovative technological device that compliments our health & physical education curriculum. It also supports a students social emotional learning by helping to reduce stress, develop confidence, self esteem and communication skills. The Lu Interactive allows our students to be immersed in “gamified” physical education with cross-curricular content. Salt Brook will get there own Lu Interactive Playground in 2022.

* Bluetooth Speaker & Microphone for Outdoor PE

\$1,969 | School: AWR

This wireless bluetooth speaker & microphone will be utilized for all indoor and outdoor PE classes. Not only will this enhance the PE curriculum for spring and fall but it will be utilized for other events being held in the AWR cafeteria or library as well as other school-wide activities such as Field Day and Character Education.

* Vex Go

\$4,260 | Schools: AWR and SB

The Vex Go kit materials help to support STEM curriculum at the elementary school level and will be used to design structures for prototyping engineering solutions. This will ultimately increase student engagement and involvement in robot design, building and programming.

* Sora to Enhance SEL, Diversity & Multiculturalism

\$4,000 | Schools: AWR and SB

This resource will enable elementary students to read digitally, both curricular titles and books of interest. Students will be exposed to books about social emotional learning, diversity and multiculturalism in both digital and print which will assist them in implementing appropriate SEL strategies inside and outside the classroom.

* Ambassador Language Interpreter

\$850 | School: SB

This system can translate all speech into the listeners environment (20 languages and 42 dialects) as well as be paired up with the iPad to allow for conversation. This device can be used by all personnel in the school building to communicate to non-English speaking parents and/or students in an out of the classroom.

* Brain Biometrics

\$8,820 | School: NPHS

This wearable, mobile (EEG) can detect electrical activity in a persons brain by attaching it to the scalp. This product is designed for the use of student research, machine learning, human behavior and market investigative projects. It can be used to better understand the parts of the brain by creating and monitoring data points in various regions of the brain. This technology is on the cutting edge of current research as it relates to Neuroscience, Forensics and Computer Programming and is a great addition to the STEM programs.

* Dual Extruder 3D Printer

\$902 | School: NPHS

Goal was to increase the number of accessible 3D printers to our students and staff. This one will be utilized for a wide variety of STEM applications including Environmental Sustainability, IED, Biomedical Engineering, Biology and extracurriculars such as STEM Club and Waksman Scholars Club. This will help to enhance students overall creativity, collaboration and communication in the classroom.

* Book Club Book Collection

\$2,200 | School: SB

Expand the collections of book titles to provide quality literature that will compliment the set curriculum. These books cover a wide range of topics including Holocaust, physical disabilities, gender differences, economic backgrounds and character struggles.

* Podcasting Microphones

\$1,500 | Schools: NPHS & NPMS

These microphones will help to enhance the curriculum for Creative writing students and others in grades 7-12. They allow students to produce higher quality projects such as podcasts, radio commercials and film presentations

* Live Fish Cam

\$2,109 | Schools: All Schools in District

A series of high-quality IP cameras will be used with live streaming will enhance the Science and STEM programs for all students. The Live Fish Cam will provide the ability to experience, in real-time, unique and diverse marine freshwater and salt water environments. Used in Oceanography, Marine Biology, Animal Behavior, Biology as well as K-8 sciences courses, the live cam feeds would provide opportunities for students at all 4 schools, and at home to experience marine organisms' way of life close up.



Lu Interactive Playground